



Enjoy a Life

With Us



York
English College

ELICOS

Course

www.york.edu.au



We are providing a
better education for you!

03-07 GENERAL ENGLISH
Course Info

08-11 CAMBRIDGE TEST PREPARATION
Course Info

12 VOCATIONAL COURSE PATHWAYS

13-15 LEARNING AT YEC

16-18 LIFE IN AUSTRALIA

19-20 HOW TO APPLY

A photograph of three young women sitting together, smiling. The woman on the left has blonde hair in a bun and is wearing a light blue shirt. The woman in the middle has dark curly hair in a bun and is wearing a white shirt with large blue headphones around her neck. The woman on the right has dark hair and is wearing glasses and a grey top. They are all looking towards the camera. A teal semi-transparent banner is overlaid on the bottom half of the image.

General English

Course Information

CRICOS Course Code: 109129M

Duration: 65 Weeks

Course overview

Duration

1-65 weeks

Course Levels

Beginner to Upper-Intermediate (5 Levels)

Mode of Delivery

Face to face

Contact Hours

20 hours / week

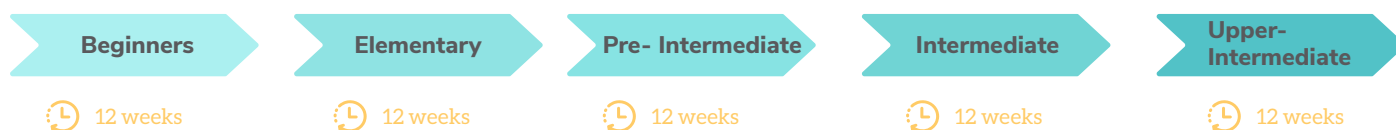
Intake

Weekly intake

The York English College General English programme levels 1 to 5 – Beginners, Elementary, Pre- Intermediate, Intermediate and Upper-Intermediate – have been designed for international students who have come to Australia to study General English for work or study- related purposes.

This programme will be offered at five levels and each level comprises 12 weeks of study. Each week consists of 20 hours of face-to-face classroom instruction. These classes are conducted in various sessions from Monday to Friday.

Students will undertake a placement test covering four main language components (reading, listening, writing and speaking) to identify an appropriate course entry level for them. They will also undertake regular assessments to evaluate the progress of their language learning and the effectiveness of the course in meeting their needs.



Course rationale

The General English programme levels 1 to 5 – Beginners, Elementary, Pre-Intermediate, Intermediate and Upper-Intermediate– have been designed to cater to different learners of General English. These learners generally have different levels of English proficiency and possess different linguistic strengths and weaknesses. They may also be from diverse cultural and low literacy to high literacy educational backgrounds.

This General English programme aims to equip students with a firm foundation in English for work or study-related reasons. As such, students taking this programme can expect an active and engaging learning environment that includes the use of authentic materials and resources for improving their listening, reading, speaking and writing skills, grammar and vocabulary.



Why study General English

It can be assumed that General English learners are typically young adults or adults who have had at least three to four years of high school education. They may have had exposure to the English language or not at all. For the majority of these learners, it is their first time in an English-speaking country or environment.

It can also be assumed that learners of General English require significant support and guidance in order to communicate in the spoken and written contexts. One of the aims of the York English College's General English programme is to help each student attain their learning objectives through guidance and support, and with regular evaluations and feedback on both their language learning progress and with regard to the effectiveness of the course in meeting their needs.



For study abroad

This course is designed for international students who have come to Australia to study General English for work or study-related purposes. Some of these students aim to attend Vocational or Tertiary study courses but they have yet to achieve the level of English necessary to enter those programmes. As such, a General English programme can help enhance their language proficiency and is a step on route to achieving that further study aim.



For work purposes

This General English programme will also appeal to another group of students who wish to improve their English for work purposes. These students acknowledge that advanced English language proficiency may be the key to gaining employment in their home country and in large international corporations. There is also another group of students whose purpose for being in Australia is for leisure or who are here on a working holiday.



For part-time employment

The General English programme will be appropriate for them if they wish to spend a few weeks practising English prior to a lengthy period of travel and leisure or prior to seeking part-time employment in Australia.



Study Goals

- ✓ Reading, writing and listening skills
- ✓ Speaking and fluency skills
- ✓ Knowledge of grammar, vocabulary and idioms
- ✓ Communication and conversation strategies
- ✓ Pronunciation

Course objectives

The main objectives of this General English programme are to develop students' skills and language to a target level of proficiency so that they can communicate their needs and intentions to others effectively and at the same time, help them achieve their personal purposes for learning English.

The objectives of this programme can be summarised as follows:



To improve the General English proficiency level of all students in the areas of speaking, writing, reading, listening, grammar and vocabulary.



To provide students with functional language so that they can communicate effectively and function within an English speaking environment.



To provide students with strategies to enhance learning opportunities outside the classroom.



To encourage and facilitate learner autonomy through learning strategies and resources other than the course book.



To expose students to the life in Australia through study trips.



To introduce students to a variety of study modes and methodologies for learning English.



Sample daily schedule for General English – Beginners

Week 1	Monday	Tuesday	Wednesday	Thursday	Friday
1st hour	<ul style="list-style-type: none"> - Meet and greet. - Review of the last week 	Listening tasks and produce the letters of the alphabet and numbers	Task Speaking Saying hello and goodbye from language live	Writing sentences and questions using correct full stops and question marks. Practice sentences and questions;	<ul style="list-style-type: none"> - Review of grammar and vocabulary in this unit - Practice Speaking & Writing
2nd hour	<ul style="list-style-type: none"> - Read and put the words in the correct order to complete the conversations - Teach Grammar: I and you, my and your 	<ul style="list-style-type: none"> - Practice saying the key phrases - Listen to various conversations and complete task 	Helping students with pronunciation work in pairs and practice the conversations.	writing a paragraph about yourself, using the example in exercise	<ul style="list-style-type: none"> - Finish and review from booklet as required. - Continue finishing the workbook exercises.
Break					
3rd hour	Write sentences and questions with correct punctuation	Work in pairs, choose a few places and ask student: 'How do you spell ...?'	Listen and read personal information	Teach the words vowel and consonant, and then go through the rule, emphasizing that in English	Options Class Students can choose between 2 hours extra grammar practice, pronunciation, songs, movies or language games in the computer lab
4th hour	Write a short paragraph about yourself	Meeting different people from exercises	Listening Activity	Ask students to ask and answer the questions	Option Class continues



Relationship to and articulation with other courses

Each level of the programme comprises a 12-week block that starts on every Monday. As such, it is expected that students will commence the course in any given week between week 1 and 12. Although there may be circumstances where students do not enroll to study for 12 weeks, it is deemed beneficial for them to study all 12 weeks (each level) in order to achieve a level that is higher than their current proficiency.

Each week consists of 20 hours of face-to-face classroom interaction. Students who successfully complete the mid-course and final course assessments with a score of at least 60% will progress to the next level of study.

Students may attend vocational or tertiary study courses after they have completed upper-intermediate level of the General English Course and achieved the level of English necessary to enter those programmes,

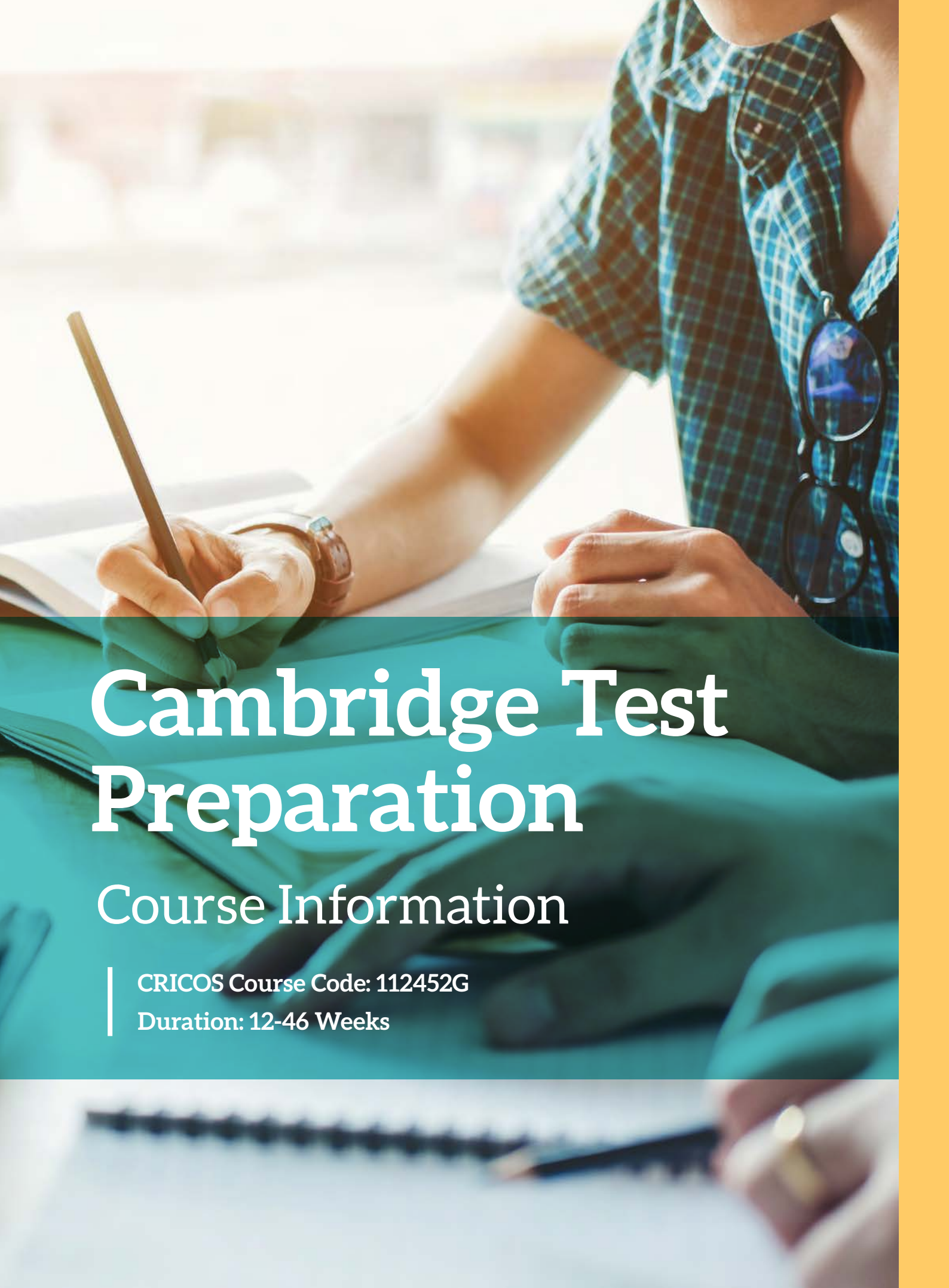
Courses Available	Entry Level Approximate: IELTS score	Post Course Articulation	Pathway
GE Beginners	0 – 1.0	0.5 – 1.5	-
GE Elementary	2.0	2.5	-
GE Pre-Intermediate	3.0	3.5	-
GE Intermediate	4.0	4.5	-
GE Upper-Intermediate	5.0	5.5-6.0	Vocational Courses

*GE Upper- Intermediate pathway to Berkeley Business Institute (BBI) and York Business Institute (YBI)'s Diploma and Advanced Diploma courses

Entry requirements

As the York English College General English programme is to accommodate students with disparate levels of English language proficiency, there are no pre-requisites for entry. However, students have to sit for a placement test covering the four main skills – listening, reading, speaking and writing – in order to be assigned to a class appropriate for their level.

English language requirement:	There is no English language requirement
Age requirements:	Learners must be a minimum 18 years



Cambridge Test Preparation

Course Information

CRICOS Course Code: 112452G

Duration: 12-46 Weeks

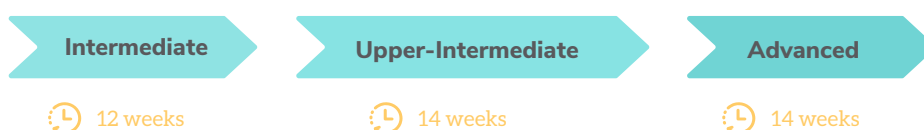
Course overview

Duration	Course Levels	Mode of Delivery	Contact Hours	Intake
12 - 46 weeks	Intermediate to Advanced (3 Levels)	Face to face	20 hours / week	Weekly intake

The York English College Cambridge Test Preparation programme is designed for international students who wish to improve their English language skills and prepare for the Cambridge English exams, including the Cambridge B1 Preliminary (PET), Cambridge B2 First (FCE), and Cambridge Advanced English (CAE). The course will focus on developing the language skills necessary for success on these exams, including reading, writing, listening, speaking, grammar, and vocabulary.

This programme will be offered at three levels and each level comprises 12-14 weeks of study. Each week consists of 20 hours of face-to-face classroom instruction. These classes are conducted in various sessions from Monday to Thursday.

Students will undertake a placement test covering four main language components (reading, listening, writing and speaking) to identify an appropriate course entry level for them. They will also undertake regular assessments to evaluate the progress of their language learning and the effectiveness of the course in meeting their needs.



Course rationale

Cambridge main suite exams such as the PET, FCE and CAE, are high-quality, established, secure and reliable tests aimed specifically at people who want to study and work in English-speaking environments. The attraction of these exams is that each offers a more in-depth assessment of the relevant language skills. Passing the PET, FCE or CAE offers students the assurance that they really have developed their language skills, whether this mastery of the basics of English through to developing high-level achievement in English the language that is needed to live and study in Australia.

There is an increasing demand for exam-focused courses: not only from students interested in further study in Australia and overseas but also from those who feel that an exam class provides more focused study. As such, this course is intended to provide students with a course of study to prepare them for the following Cambridge main suite examinations:

- Cambridge English: Preliminary (PET)
- Cambridge English: First (FCE)
- Cambridge English: Advanced (CAE)



Course objectives

The objective of a Cambridge Test Preparation course is to familiarize students with the format and content of the Cambridge exams, provide them with strategies for approaching each section of the exam, develop their language skills in all areas, offer ample practice and feedback to build confidence and proficiency in using English, and provide ongoing support and guidance throughout the exam preparation process.



To prepare students for undertaking Cambridge main suite exams (PET, FCE and CAE) so that they can realise their full potential



To develop reading skills and knowledge of English relevant to the Reading and Use of English paper of the Cambridge main suite exams (FCE and CAE)



To develop writing skills relevant to the Writing Paper of the Cambridge main suite exams (FCE and CAE)



To develop reading skills relevant to the Reading and Writing Paper of the Cambridge main suite exams (PET)



To develop speaking skills relevant to the Speaking Paper Cambridge main suite exams (PET, FCE and CAE)



To develop speaking skills relevant to the Listening Paper of Cambridge main suite exams (PET, FCE and CAE)

Weekly timetable (sample)

	Duration	Monday	Tuesday	Wednesday	Thursday
9:00 - 10:30	90 minutes	Session 1	Session 1	Session 1	Session 1
Break (15 mins)					
10:45 - 12:15	90 minutes	Session 2	Session 2	Session 2	Session 2
Break (45 mins)					
13:00 - 15:00	120 minutes	Session 3	Session 3	Session 3	Session 3



Relationship to and articulation with other courses

There are presently no plans to set up articulations with other institutions for this course. Within our own institution, PET would be available to General English students at an Intermediate level, FCE would be available to General English students at an Upper Intermediate level and CAE would be available to General English students at an Advanced level.

Courses Available	Entry Level Approximate: IELTS score	Post Course Articulation		Pathway
		CEFR	IELTS	
Cambridge Test Preparation – Intermediate (PET)	4.0	B1	4.5	Vocational Courses
		B1+	5.0	
Cambridge Test Preparation – Upper intermediate (FCE)	5.0	B2	5.5	
		B2+	6.0	
Cambridge Test Preparation – Advanced (CAE)	6.0	C1	6.5	
		C1+	7.0	

*Pathway to Berkeley Business Institute (BBI) and York Business Institute (YBI)'s Diploma and Advanced Diploma courses

Entry requirements

- Students wishing to commence PET need to achieve an Intermediate level of English on York English College's placement test. Alternatively, students would need to provide evidence that their English is at an IELTS level of 4.0 (or equivalent) prior to being accepted on the course.
- Students wishing to commence FCE need to achieve an Upper Intermediate level of English on York English College's placement test. Alternatively, students would need to provide evidence that their English is at an IELTS level of 5.0 (or equivalent) prior to being accepted on the course.
- Students wishing to commence CAE need to achieve an Advanced level of English on York English College's placement test. Alternatively, students would need to provide evidence that their English is at an IELTS level of at least 6.0 (or equivalent) prior to being accepted on the course.

English language requirement:	an IELTS level of 4.0 (or equivalent) prior to being accepted on the course
Age requirements:	Learners must be a minimum 18 years



Gain an Australian qualification with us

Pathway to Berkeley Business Institute (BBI) and York Business Institute (YBI)'s Diploma and Advanced Diploma courses

Courses pathways

York Business Institute (YBI) and Berkeley Business Institute (BBI) provide courses ranging from Certificates to Advanced Diplomas in vocational areas including, Business, Accounting and Hospitality Management, Information Technology, Human Resource Management, Hospitality, Marketing and Communication, Leadership and Management, Project Management, Early Childhood Education and Care, and for those who aspire to higher qualifications. YBI even offer a Graduate Diploma in Management. We aim to provide a course that provides a basis in as many professional opportunities for students as possible.



Graduate Diploma of Management (Learning)



Business

• Certificate III • Certificate IV • Diploma • Advanced Diploma



Human Resource

• Certificate IV • Diploma • Advanced Diploma



Information Technology

• Certificate IV • Diploma • Advanced Diploma



Accounting

• Certificate IV • Diploma • Advanced Diploma



Hospitality

• Certificate III • Diploma • Advanced Diploma



Marketing & Communication

• Certificate IV • Diploma • Advanced Diploma



Leadership & Management

• Certificate IV • Diploma • Advanced Diploma



Project Management

• Certificate IV • Diploma • Advanced Diploma



Early Childhood Education & Care

• Certificate III • Diploma

Make Quality Education Fair and Accessible

Enjoy an

Incredible Life at YEC



Campus Facilities

- ✓ Student library and lounge
- ✓ Computer laboratories
- ✓ Student lounge with kitchenette, microwaves,
- ✓ Fridge and vending machines.
- ✓ Modern and up-to-date facilities
- ✓ Air-conditioned spacious classrooms
- ✓ Large windows for natural light
- ✓ Campus Wi-Fi access for students



Teaching quality

Our Teachers are fully qualified ELICOS practitioners and all of the students are satisfied with the Teaching they have received



Student support

Students are satisfied with the support they receive, whether it is enrolment systems, learning advice, careers advisors or health services. Our staff were always available and helpful



Campus features

Our campus has modern and up-to-date facilities and we are located in the middle of the Sydney CBD. This means that we are very close to all forms of transport, shopping malls and restaurants



Learner engagement

Students are satisfied with their engagement with learning at their institution and whether they have a sense of belonging at their institution.

Learning

Experience



*Qualified teachers
resources and
Professional
teaching support*



*Diversity in the
classroom and
harmonious learning
environment*



*Up-to-date interactive
and multimedia
teaching facilities*



*Full student service
and comfortable
campus environment*



Sydney has been voted one of the most beautiful cities in the world. There is a wide variety of things you can see and do in Sydney when not studying.

We help you to learn about and enjoy Australian culture. There are plenty of amazing activities for you to experience!

Student

Experiences



Movie club

Now Screening some of Hollywood's favourite films. Have some popcorn and conversation as you snuggle in to watch the greatest hits in English. Suggestions Welcome!



Conversation Club

Practice your skills in chatting with these lovely afternoon tea times with your classmates and friends.



YEC Workshops

From Public Speaking, to Painting, to Crafts....the list is endless. This is an interactive hands-on way to learn something new and have fun too!



Excursions

Visit museums, beaches, sights around Sydney and the harbour! What a gorgeous way to feel at home in this beautiful city.



Life in Sydney

Homestay

Stay with one of our friendly families and you will experience typical Australian life.

- ✓ Carefully selected families, with a genuine desire to welcome you
- ✓ Comfortable and clean homes
- ✓ Close to public transport
- ✓ Fully-furnished single room
- ✓ Breakfast and dinner are shared with the family (also lunch at the weekend)

Rent

Rent in Sydney is usually paid fortnightly. Note that when you move into rental accommodation you will have to pay a bond, which is usually four weeks' rent, plus two weeks' rent in advance. The bond will be refunded to you when you move out.

The cheapest studio apartments and single rooms in a shared apartment are available from around \$200 (AUD) per week but can go up to \$500 (AUD) per week. Rent generally includes all utilities, but you will need to buy and cook your own meals. Check out these accommodation providers.



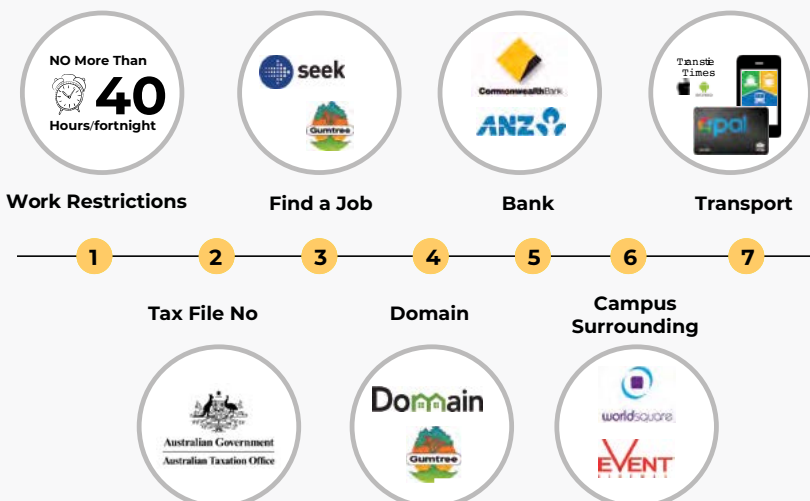
Choices for Accommodation



When choosing accommodation in Sydney or wider NSW, the most important thing is to feel secure and happy, so you can focus on your studies and enjoy life. It is a good idea to research all your options before making a decision.



Living Useful links



- 1** **Work Restrictions**
www.homeaffairs.gov.au
- 2** **Tax File No.**
www.ato.gov.au
- 3** **Seek**
www.seek.com.au
- 3** **Gumtree**
www.gumtree.com.au
- 4** **Domain**
www.domain.com.au
- 4** **Gumtree**
www.gumtree.com.au
- 5** **Commonwealth Bank**
www.commonwealthbank.com.au
- 5** **ANZ Bank**
www.anz.com.au
- 6** **Event Cinema**
www.eventcinemas.com.au
- 6** **Worldsquare**
www.worldsquare.com.au
- 7** **TripView**
search Trip View in Apple store or Google Play

Working

While Studying

If you are a student with a Student Visa, you may be able to work for up to 48 hours per fortnight during the year (and full time during scheduled study breaks), but not all students will be eligible.



Starting your search for work

Australia has a huge range of job search websites including:

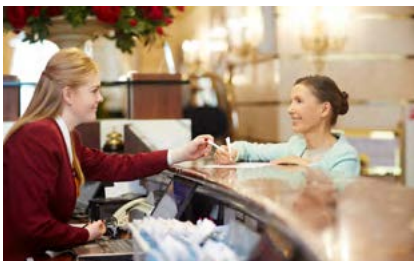
- Adzuna
- Career One
- Explore Jobs
- Grad Australia
- Seek
- Student Job Australia

You can use the Fair Work Ombudsman's Pay and Conditions Tool (P.A.C.T) to find out pay rates, penalties and allowances, leave entitlements and more.



Getting ready for the job

- ✓ **Step 1:** Research the organisation
- ✓ **Step 2:** Create a winning CV
- ✓ **Step 3:** Write a cover letter
- ✓ **Step 4:** Submit your application
- ✓ **Step 5:** Attend your interview
- ✓ **Step 6:** Ready to work



Working experience and internships

Many international students complete a work experience placement or an internship while studying. There are different types of work experience options available to international students

- Cadetships
- Co-operative education
- Holiday work
- Internships



Workplace health & safety

It's important you know your workplace health and safety rights and obligations. Your manager must give you appropriate training, supervision, information and equipment to ensure you can work safely. You should speak up if you think you could be hurt at work.

More Information →

Australian Experience

Deciding where to live in a country you may not be familiar with isn't easy! To set you on the right path, check out our list of the best suburbs for international students, within in the Sydney metropolitan area. From buzzy beachside suburbs to edgy inner-city precincts, Sydney's neighbourhoods celebrate the city's beauty and diversity.



Beach and barbecue



Excursions



Sports and activities



Living and study



Living

Expenses

Living expenses can include accommodation, transportation, food, clothes, books and entertainment. You will need approximately AUD \$21,041 to cover the whole year of study in Sydney (excluding tuition fees). There are a range of accommodation options available in Australia to suit your needs and budget. The most common types of accommodation are homestay and rentals.



Expense	Cost	Notes
Accommodation	Shared rental: \$95-250/wk Homestay: \$235-325/wk Rental: \$185-440/wk	This is will vary greatly depending on where you live and the type of accommodation you choose.
Food	from \$100 per week	This is for a week's worth of groceries from supermarkets.
Transport	from \$25 per week	Public transport is very easy in Sydney and is also fairly cheap. Opal is a smart card for travel on trains, buses, ferries and light rail in Greater Sydney area.
Utilities	from \$25 per week	The costs for utilities will decrease per person if you share accommodation
Medical	from \$50 per consultation	Your OSHC will reimburse your most costs, but you will need to pay up front. There are occasional costs (including consultations) that extend beyond the coverage of your medical plan.
Other costs (clothing, entertainment, phone etc.)	Varies	This is will vary greatly depending on what life style you choose.



Overseas student health cover

The health care system in Australia is one of the best but the cost of treatment can be expensive. While you are enjoying your student life in Sydney, the last thing you want to worry about is medical expenses if you get sick or have an accident. It is a visa requirement that all international students have Overseas Student Health Cover (OSHC) for the duration of their student visa.

Start your study journey with us

STEP 1: CHOOSE A COURSE

Check out our course outline and entry requirements at www.york.edu.au

STEP 2: COMPLETE Enrolment FORM

Read the terms & conditions and the Student Handbook available from our website

STEP 3: PROVIDE RELEVANT DOCUMENTS

Attach all relevant documents. For example

- ✓ Certified copies of passport
- ✓ Education qualifications
- ✓ English qualifications
- ✓ Working experience (if relevant)
- ✓ RPL application (if relevant)

STEP 4: SUBMIT YOUR APPLICATION

Return your application form and the necessary documents to :
York English College
Suite 1, Level 1 , 338 Pitt St. Sydney NSW 2000 AUSTRALIA
OR email to : info@york.edu.au

STEP 5: RECEIVE AN OFFER LETTER

Upon receipt of your Enrolment Form and supporting documents, an interview will be conducted by a member of the Institute's Admission Team or a delegate to assess on your suitability to the course that you have applied for.

If your application is successful you will receive a letter of offer for you nominated course along with a written agreement. When we receive your signed student agreement and fees, we will send you an electronic Confirmation of Enrolment(eCoE). This eCoE is used to apply for your student visa. Once the visa is granted, you are ready to go!



WWW.YORK.EDU.AU

Make Quality Education Fair and Accessible

DISCLAIMER: Changes in circumstances after this date may alter the accuracy of the information. YEC reserves the right to alter any matter described in this brochure without notice. Readers are responsible for verifying information that pertains to them by contacting the College.

May 2023, Version 2



WELLINGTON
EDUCATION GROUP

— Strive for Excellence —

BERKELEY
BUSINESS INSTITUTE

YORK Business
Institute

YORK English
College

CONTACT
YEC



SUITE 1, LEVEL 1, 338 PITT ST. SYDNEY NSW 2000



+61 2 8316 6600



INFO@YORK.EDU.AU



YBISYDNEY